

Bowers & Wilkins

Zeppelin





Zeppelin™ Here's the stereo speaker system your iPod® has been waiting for. Zeppelin is from Bowers & Wilkins, makers of the speakers that a lot of the music on your iPod was probably made on. B&W creates technologies and systems that world-leading studios depend on, and that find their way into even its most affordable speakers. Zeppelin will fill a room with crisp, deep, lifelike stereo sound, and deliver musical detail that you won't believe could fit on your iPod. That's because the two have so much in common: blissfully simple design and world-leading technologies that let you get the most out of your music.



Nautilus™, the speaker that sparked a revolution in the audio industry and spawned the pioneering technologies and design concepts found in Zeppelin and other B&W speakers.

Passion for music Music's important. You know it, we know it. At Bowers & Wilkins, the quest to develop the perfect loudspeaker has lasted more than 40 years. What do we mean by perfect? We mean a speaker that portrays a musical performance exactly as it was recorded, with zero colouration. Like you, we don't just want to hear music; we want to experience it, feel it and be a part of it. Founder John Bowers instilled in the company a passion to pursue his dream of the ultimate speaker. You wouldn't believe how close we've come. And you wouldn't believe the kind of lengths we'll go to get even closer. Music's more than important. It's everything.



Peter Gabriel set up Real World Records to capture the extraordinary sounds of artists from across the globe. Now he's part of B&W's Society of Sound, sharing a passion for music.



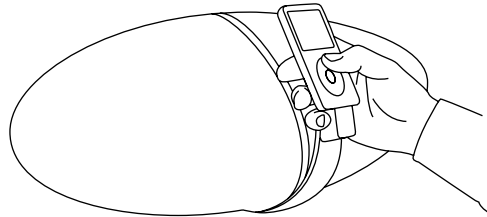
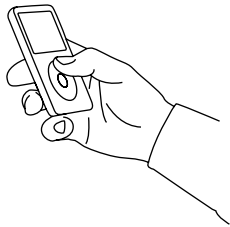


The reference speaker Zeppelin is a direct descendant of B&W's legendary reference speaker range. The 800 Series is sought-after by world-leading recording studios. At Abbey Road, for example, it has been a fixture since the early 1980s. With that first series, we set out to develop a speaker system with no compromises; one modelled on the ideals of engineers and producers. New generations of the 800 Series have maintained its reputation for near-flawless sound. What artists play is what gets played back to them. With Zeppelin, the technologies that allow that to happen can be experienced in your own home.



Michael Gleason and Peter van Hooke, whose Live From Abbey Road international TV show captures extraordinary, live musical performances in the world's most inspiring recording environment, on B&W 800 Series speakers.

The sleeker speaker Your iPod is a treasure trove. Pristine digital copies of thousands of tracks, all waiting to be played to their full potential. Zeppelin sets them all free. A full stereo system in one unit, it releases all of the detail and atmosphere that standard iPod/MP3 speaker systems miss. Thanks to its unique floating arm and universal docking platform, you can play any iPod on Zeppelin and control it as easily as if it were in your hand. Tuck Zeppelin under your arm and take high-end sound with you, upstairs, downstairs, outside and poolside. Station it in a den, bedroom, kitchen, office or second home. Or simply enjoy a simpler, more stylish replacement for your traditional audio system. Zeppelin rocks, wherever you are.



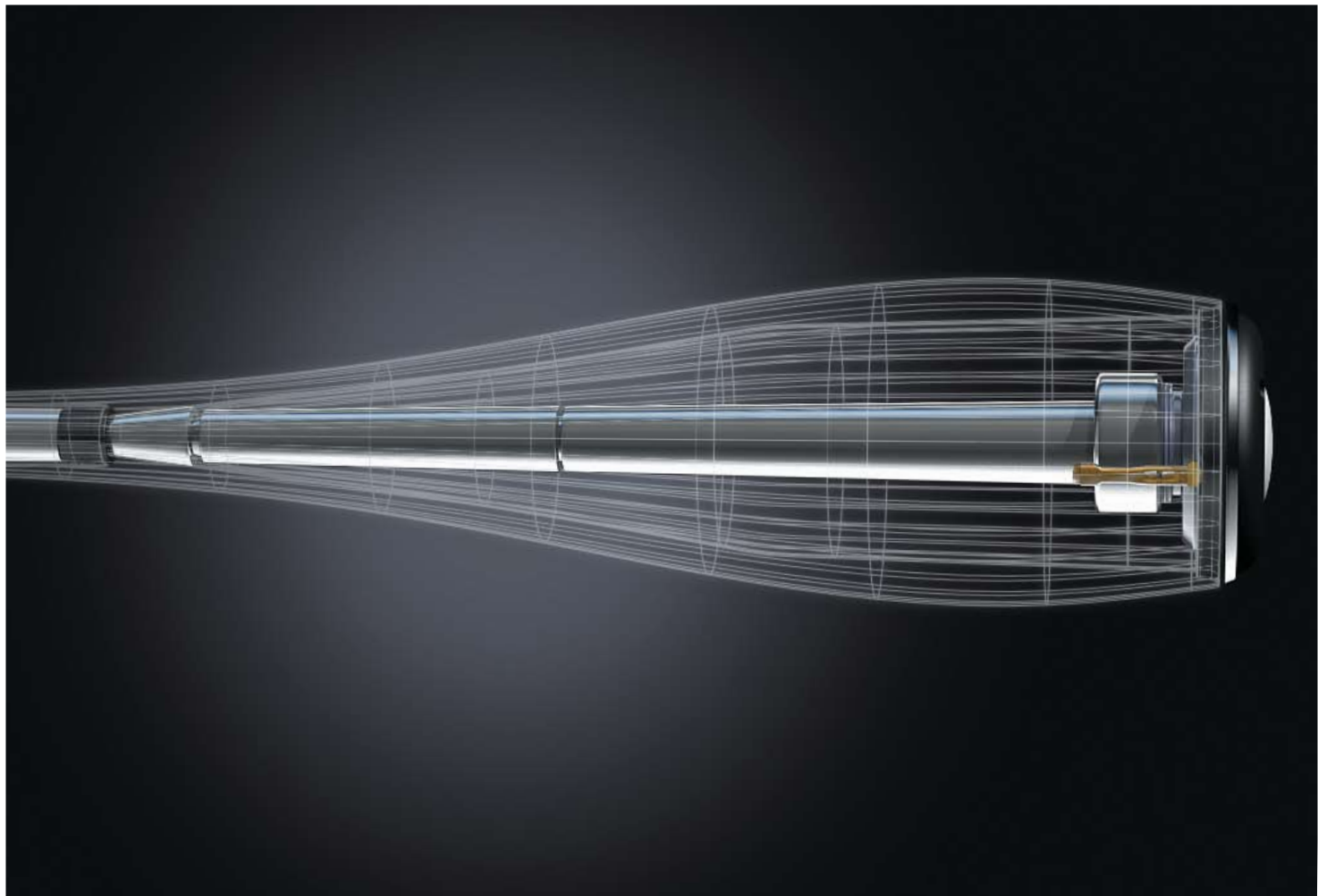
Zeppelin is simple to set up and use. Its specially designed floating arm system lets you cradle the iPod in your hand and thumb the click-wheel naturally and easily. Just scroll down to your chosen musical destination, hit the play button and let Zeppelin take you there.





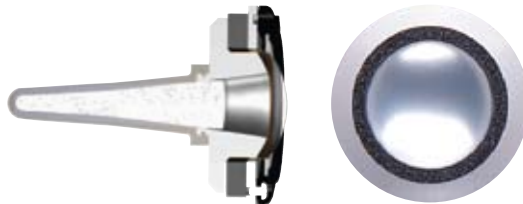
Hear, there, anywhere You can take Zeppelin anywhere. But not everywhere is made for listening to high quality portable hi-fi. Put a rival system in the corner of a room, for example, and you run the risk of echoing bass overwhelming the rest of the sound. Not Zeppelin. We've included a simple but ingenious bass adjustment control to allow you to optimize the sound to suit the immediate surroundings. From your iPod, you can vary Zeppelin's bass level according to the amount of space around it. In confined spaces, it's the most refined sound you'll hear.





Technology With Zeppelin, you get 40-plus years of experience and know-how in speaker design in a single package; technologies developed for dedicated high-end speakers applied to an iPod system for the first time. We're not talking about a simple repackaging or downsizing of components. Zeppelin is an entirely new creation, designed according to principles pioneered on high-performance B&W models, from the extraordinary shape of its shell to the specially tailored studio-standard technologies within.

Tweeters Handling high frequencies is a pair of aluminium dome tweeters that include refinements made for the latest B&W 800 Series, plus Nautilus™ tube loading, which acts like an acoustic black hole, swallowing superfluous sound from behind the dome. Sweeter tweeters you'll never hear.

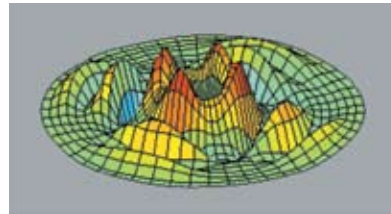




Ultra-wide sound The less physical material there is around tweeters and midranges, the better they sound. Zeppelin's rounded, tapering ends aren't there just for show. By minimising the baffle area around the drive units, the cabinet reduces diffraction effects, making for ultra-wide sound dispersion and a much smoother response. In other words, it sounds as good as it looks.



Midrange The twin midrange drive units that supply the bulk of Zeppelin's amazing sound rely on glass fibre cones, optimised using laser interferometry. Strategically placed resin-filled slots in the cones dramatically reduce the unwanted effects of standing waves, leaving music sounding cleaner, clearer and true to life.







Inner strength The Zeppelin's elegant cabinet is actually a clever composite shell comprising a highly-damped constrained layer in between a stiff polymer inner-casing and a heavy stainless steel cover. This ensures the cabinet has the highest possible strength so what you hear is the drive units themselves and not the cabinet that contains them.



DSP Digital Signal Processing is used to actively adjust the sound balance in relation to the volume level selected by the listener. This ensures the Zeppelin delivers its warmly detailed sound in small and large environments at all listening levels.





Home entertainment by B&W Wherever you need sound, you need B&W. We design, develop and manufacture speaker systems to suit every kind of hi-fi and home theater set-up, and every pocket. There's the formidable 800 Series, as heard at Abbey Road Studios. Or the 600 Series, whose affordable, audible brilliance has been winning awards for over a decade. There's the compact, minimalist Mini Theatre Series, the slimline FPM and VM ranges, and the Custom Series for in-wall installations. And if it's some serious bass you need, choose from our collection of rock-solid subwoofers. To learn about the full range, go to www.bowers-wilkins.com.

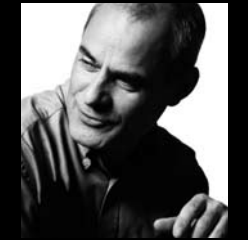
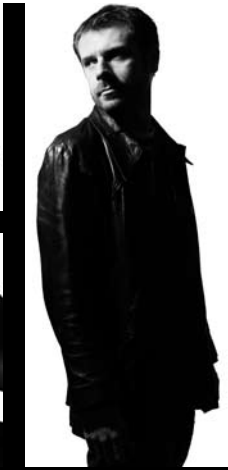


At the new B&W website, you can browse all of our ranges and models, read reviews, download brochures and manuals, and learn more about the groundbreaking technologies that have earned us a worldwide reputation.

Society Of Sound At B&W, the pursuit of perfect sound continues. For 40 years, we've been dedicated to creating a loudspeaker that neither adds nor takes away from the recorded sound. In the process, we've become a world leader, developing best-in-class speakers like Zeppelin. It's a passion. Thankfully, we're not alone. There are others – musicians, technicians, critics, customers – who are as dedicated as we are. And now, we're coming together to share knowledge, insights and our love of sound. You can join this global network, too, and get closer to your music. Come to www.bowers-wilkins.com to find out more and to join the Society of Sound.



Zeppelin was designed by Native in London. Morten Warren, founder of Native, and his team have worked with Bowers & Wilkins for over 10 years, designing award-winning classics such as the 800 Series and PV1. Working closely with B&W's engineering team at the world renowned Steyning Research Establishment, they together developed a vision for a simple, bold and compact form that offers an ideal acoustic engineering envelope. Another classic in the making.





Zeppelin specifications

Frequency range	-6dB at 47Hz & 22kHz
Drive units	1x 125mm (5 in) bass 2x 90mm (3.5 in) midrange 2x 25mm (1 in) metal dome tweeter
Amplifier output power	1 x 50W (bass) 2x 25W (midrange/tweeter)
Power input voltage	100V - 240V ~ 50 / 60Hz
Rated power consumption	20W
Standby power consumption	3.7W
Inputs	30-pin iPod connector 3.5mm mini jack analogue / optical digital (TOSlink) USB 2.0 slave (software upgrades)
Outputs	S-video (mini DIN) Composite video (RCA Phono)
Height	173mm (6.8 in) without tilt pad 198mm (7.8 in) with tilt pad
Width	640mm (25.2 in)
Depth	208mm (8.2 in)
Net Weight	7.5kg (16.5 lb)
Finishes	Enclosure: Polished stainless steel with black trim Grilles: Black cloth



Bowers & Wilkins

B&W Group Ltd
Dale Road
Worthing West Sussex
BN11 2BH England

T +44 (0) 1903 221800
F +44 (0) 1903 221801
info@bwgroup.com
www.bowers-wilkins.com

B&W Group (UK Sales)
T +44 (0) 1903 221 500
E uksales@bwgroup.com

B&W Group North America
T +1 978 664 2870
E marketing@bwgroupusa.com

B&W Group Asia
T +852 2869 9916
E info@bwgroup.hk

Zeppelin and Nautilus are trademarks of B&W Group Ltd.
iPod and iTunes are trademarks of Apple Inc.
registered in the US and other countries.
Copyright © B&W Group Ltd.
Design by Thomas Manss & Company.
Printed in the UK.